

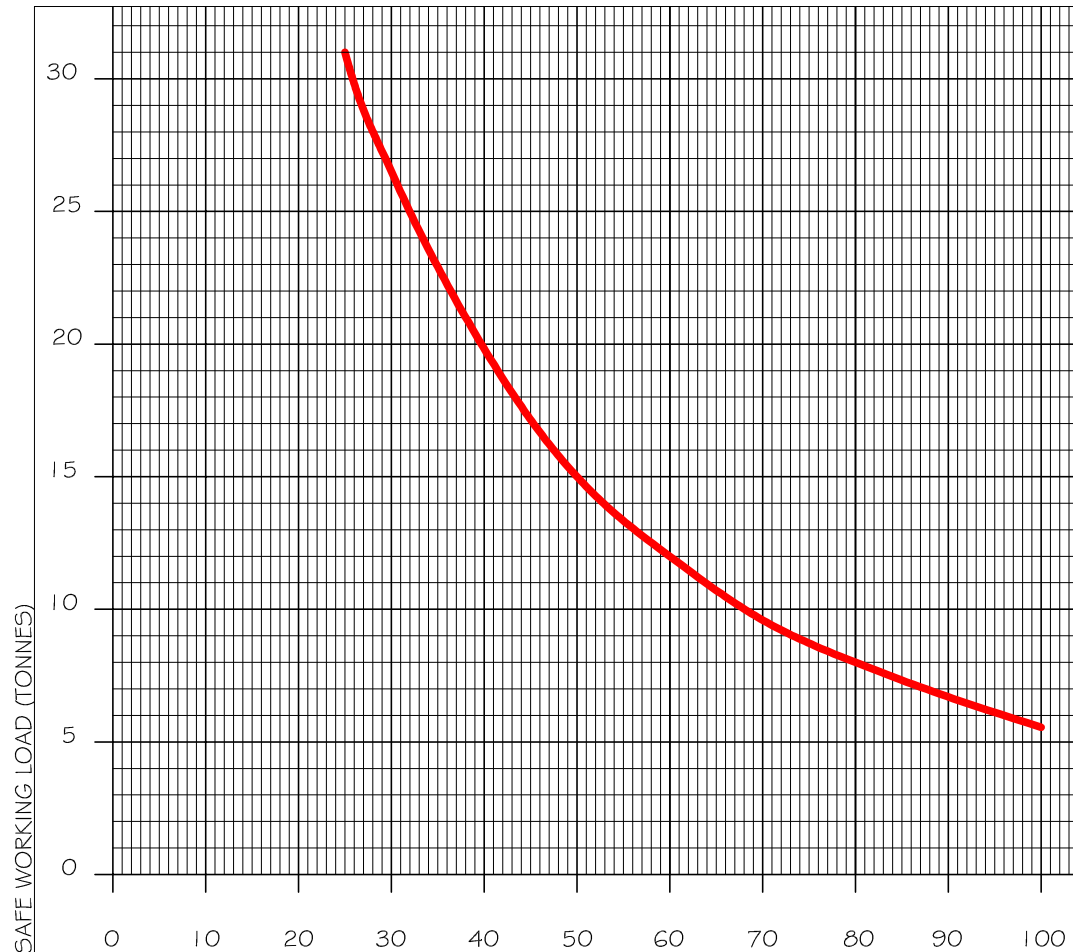
USE THIS CHART TO DETERMINE THE S.W.L FOR THE CRANE WHEN:

1. LIFTING STERN OR BOW
2. INFLAT CALM WATER
3. USING MAIN BLOCK - 6 FALLS

ON NO ACCOUNT DURING ANY LIFTING OPERATION SHOULD THE FREEBOARD AT ANY POINT ON THE BARGE BE LESS THAN 250mm

LINKBELT CRANE TC218
MOUNTED ON BARGE
"TMS MAVERICK"

FLY JIB MAXIMUM
LOAD AT ANY
RADIUS 4.25
TONNES



S.W.L. MAIN BLOCK
USING 6 FALLS
WHEN LIFTING OVER
THE SIDE OF THE
BARGE

IF IN DOUBT
ASK

DATA PREPARED BY
BRIAN KNIGHT
C.ENF.,M.I.MAR.E.

INDICATED RADIUS (FEET) ON SAFE LOAD INDICATOR - RED DIAL N.B. NOT ACTUAL RADIUS